

PRODUCT DESCRIPTION

THM is a medium density panel, covered with a high impact plastic sheet on one of his faces, which offers a Wood imitation texture for architectural concrete.

Available on models W05, W07 and W08 from LHV formliner brochure.

RECOMENDED USES

- Architectural concrete walls and slabs.
- All concrete walls.
- Concrete construction elements such as: columns, pillars, balconies, etc.
- Precast concrete elements.



TECHNICAL CHARACTERISTICS

TECHNICAL DATA	TEST	UNIT	RESULT
Thickness	EN 324-1	mm	3,5 ± 0,2
Length	EN 324-1	mm/m	2000 ± 2 (máx. 5 mm) (*)
Width	EN 324-1	mm/m	1200 ± 2 (máx. 5 mm) (*)
Squareness/Tolerance	EN 324-2	mm/m	2
Flexión strength	EN 310	N/mm ²	23
Tensile strength	EN 319	N/mm ²	0,65

(*) Variable depending on the texture model.

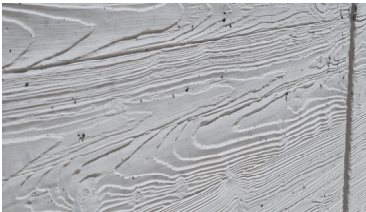
Note: all mentioned data are subject to experiences developed by the raw material supplier.

DESCRIPTIVE MODEL

__ m² of panel "VALERO THM" model __, of 3,5 mm thickness, incorporated to the inside face of the formwork, to obtain a concrete surface with an imitation texture finish.

ADVANTAGES

High quality of architectural concrete



High strength to tear



Moisture resistance on textured face.



REMARKS

- Never use release agents
- Avoid contact with steel formwork and vibrator.
- In no case should there be direct contact between water and the face NOT COVERED with the HIPS sheet
- Storage always under cover and on a flat surface
- Sealing of the joint with waterproof sealing tape to prevent moisture seepage on tje side NOT COVERED by the HIPS sheet
- Protec from temperature changes to prevent panel deformation

NOTE: The non-compliance with the above considerations and alteratiосn caused by cutting the product, may alter the product. In these cases, our company cannot be held responsible for the final concrete finish.